

Flatness Specification: DIN 15185

Table 1. Differences in height across the driving track

	permissible difference in height h as limit value between the outer driving tracks Sp with track width S in m			
	up to 1,0 m	above 1,0 m up to 1,5 m	above 1,5 m up to 2,0 m	above 2,0 m up to 2,5 m
Truck lift height $\leq 6,00$ m	2,0 mm	2,5 mm	3,0 mm	3,5 mm
Truck lift height $> 6,00$ m and mechanized operation	1,5 mm	2,0 mm	2,5 mm	3,0 mm

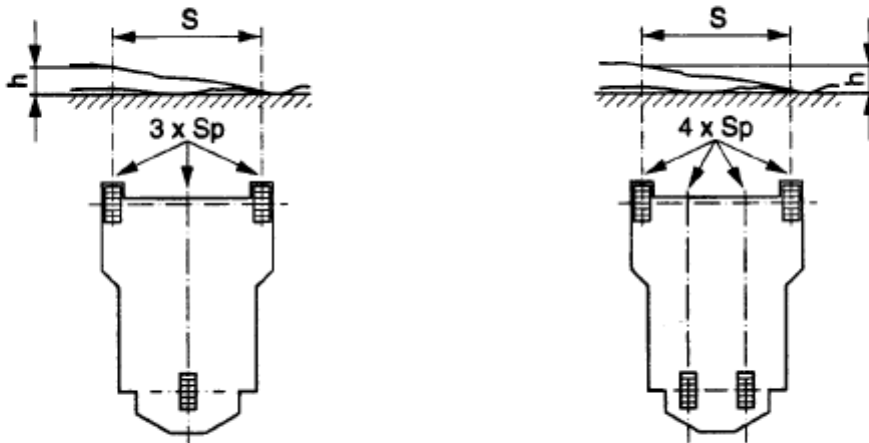


Table 2. Flatness tolerance lengthwise of the drive tracks

Fixed measure for limit values in the drive tracks Sp with distances of the measure points in m				
	1,0 m	2,0 m	3,0 m	4,0 m
for all types of application	2,0 mm	3,0 mm	4,0 mm	5,0 mm
The checking of the flatness is done according to DIN 18 202				

The remaining surface must correspond in its flatness to DIN 18 202/05.86, table 3, line 3.

Face Consultants Ltd.

Dene House
North Road
Kirkburton
Huddersfield
United Kingdom
HD8 0RW

Offices Worldwide.

VAT Reg No: 567 2890 01. Registered in England No: 2928994.



COGRI GROUP

Tel: +44 (0)1484 600090

Fax: +44 (0)1484 600095

Email: info@face-consultants.com

Website: www.face-consultants.com